

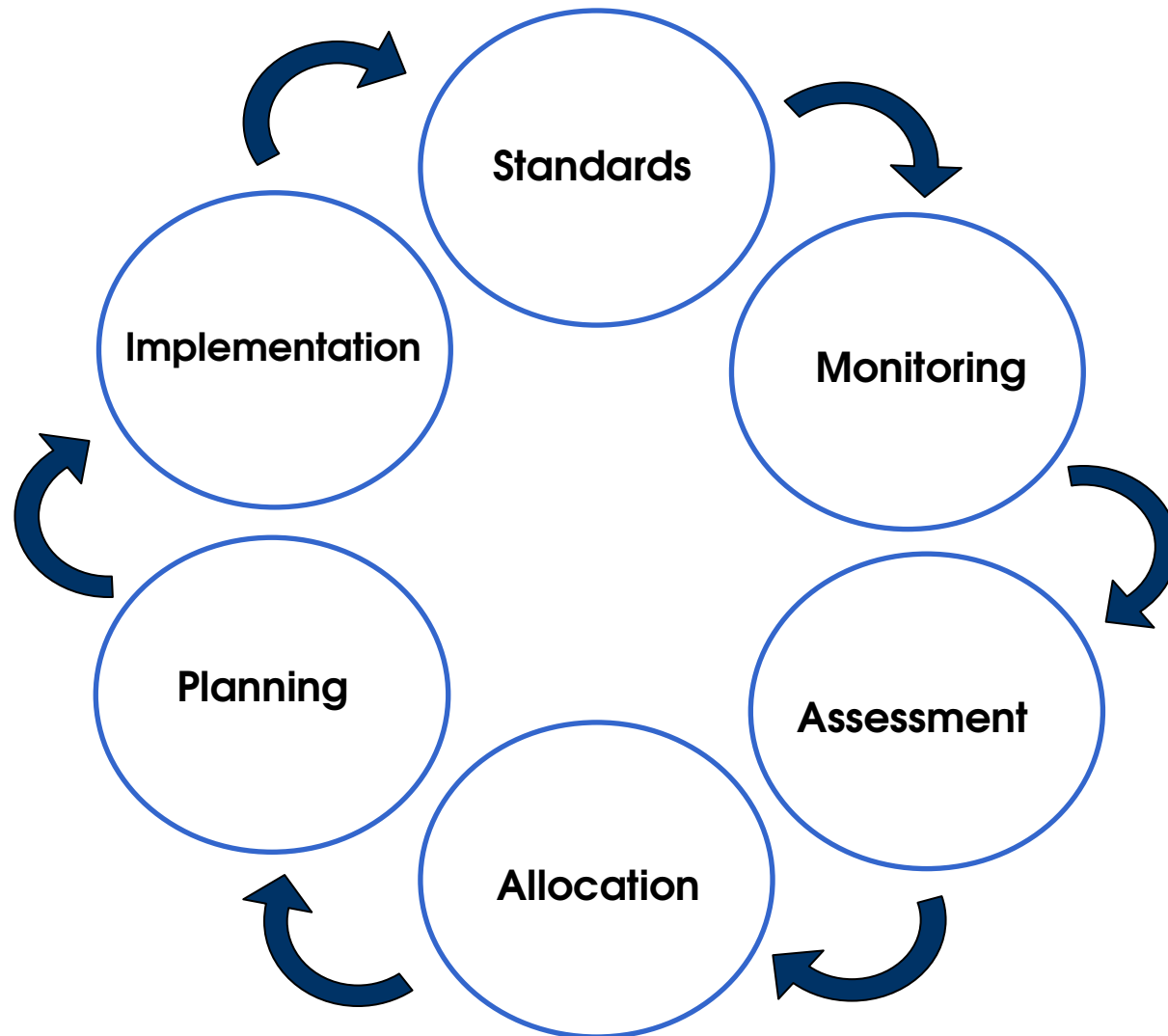
The Catawba River Basin

South Carolina Update

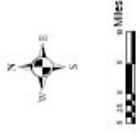
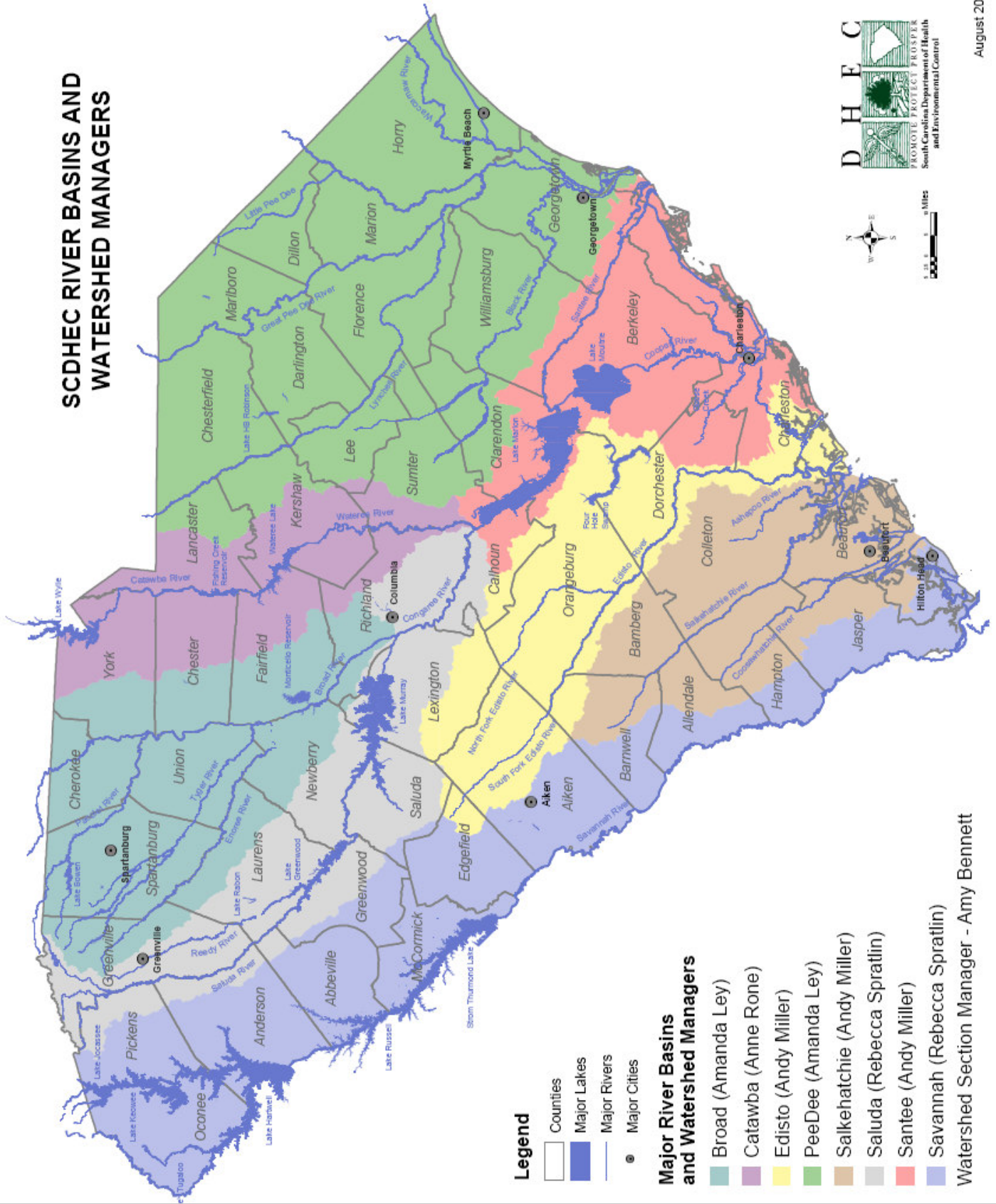


Anne Rone
Watershed Manager
SCDHEC Bureau of Water
(803) 898-4187
roneae@dhec.sc.gov

Water Quality Assessment in SC

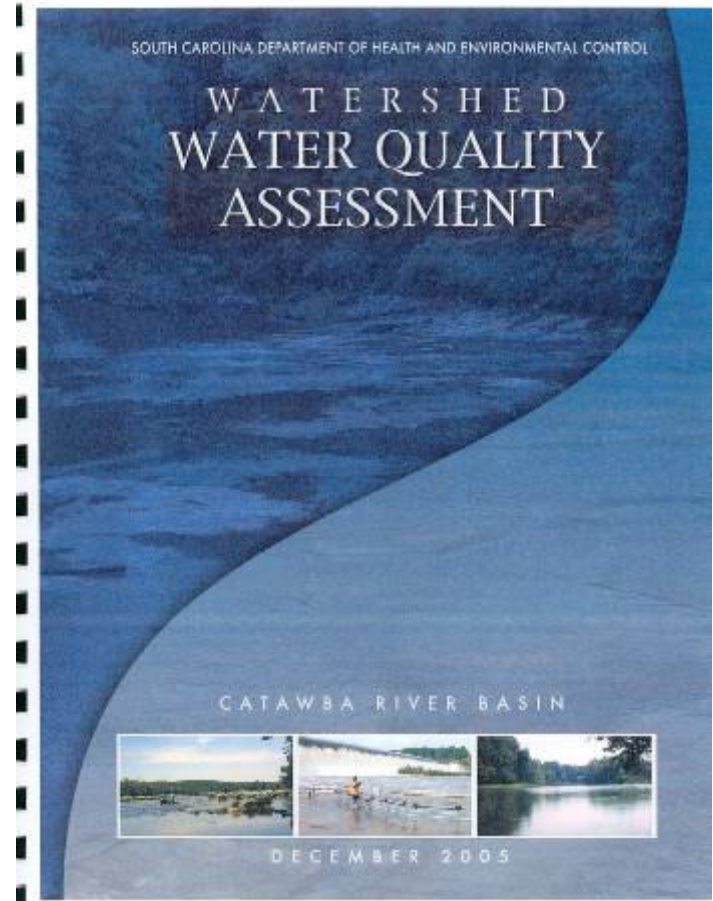


SCDHEC RIVER BASINS AND WATERSHED MANAGERS



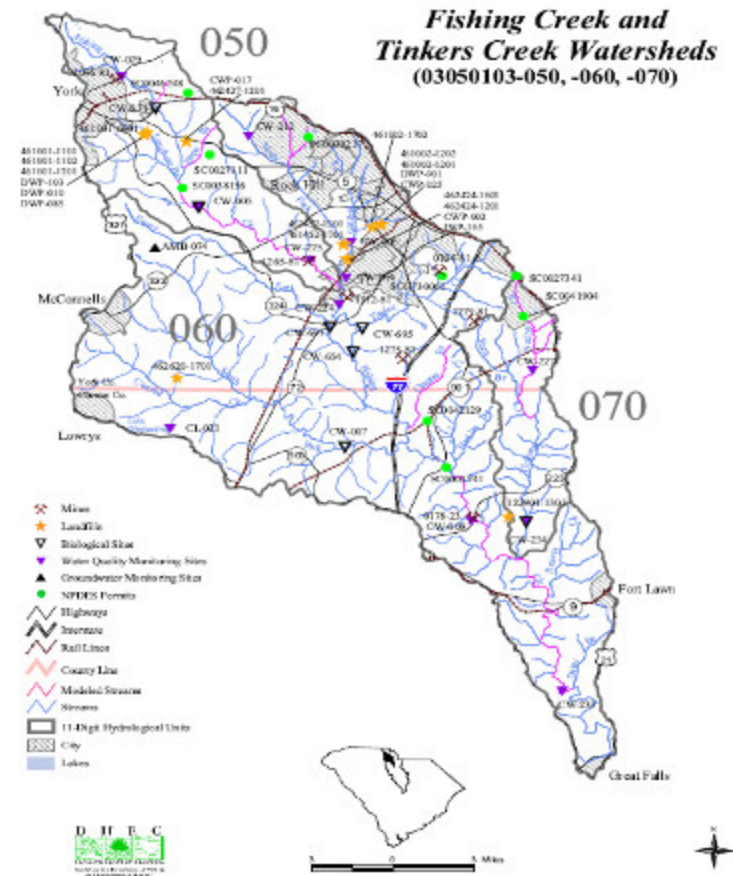
Watershed Water Quality Assessment Documents (WWQA)

- Overview of monitoring strategy & factors assessed in watershed assessment
- Water uses, classifications & water quality indicators
- Major aquifers & groundwater monitoring
- Watershed protection & restoration methods including stakeholder groups
- Physical description of subwatersheds & maps
- Point & Nonpoint source including permit references



Water Quality Data in the Catawba WWQA

- Description & map of monitoring stations by subwatershed
- Supporting & impaired sites
- Data summary by site
- Trend data for 1998-2002 (changes in use support)
- Includes water quantity withdrawals



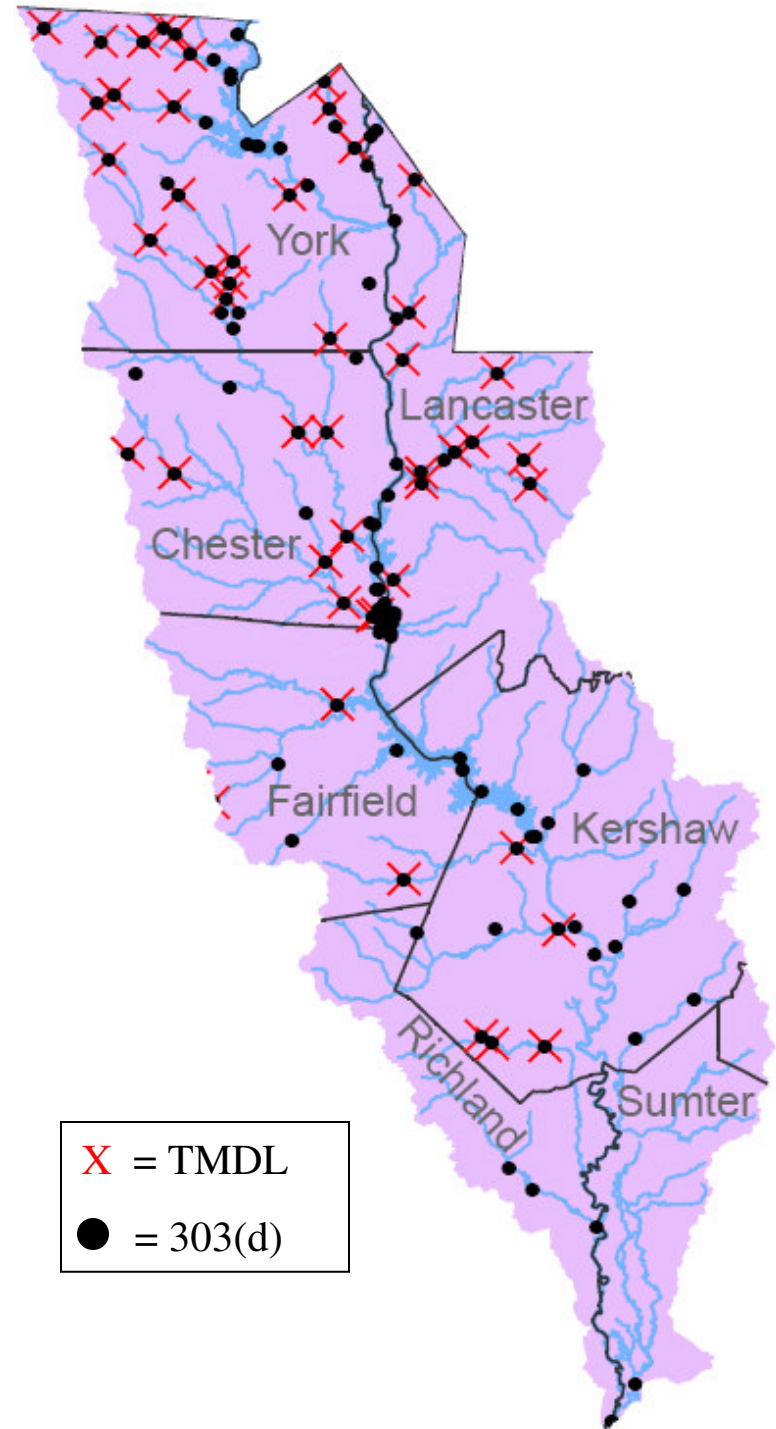
WWQAs are updated every 5 years – the Catawba document will be updated next year (2010)

Catawba Watershed Current Water Quality

84% of monitoring sites in the watershed are impaired (on 303(d) or in a TMDL)

164 total impairments due to **11** different causes

Majority of impairments are in **York**, **Chester** and **Lancaster** counties



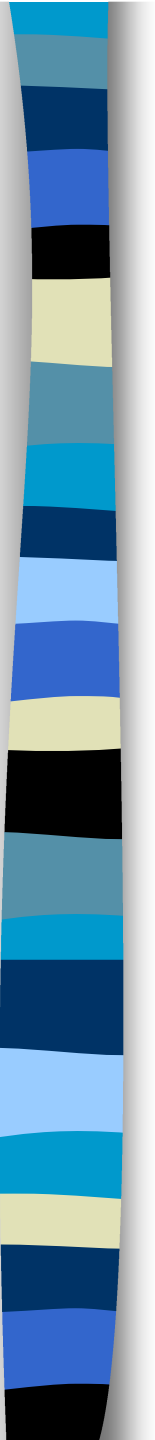
Current Water Quality: Major Pollutants in the Catawba

Cause

FC	35.4%
TP	14.6%
DO	10.4%
BIO	9.8%
Turbidity	8.5%
CU	8.0%
pH	6.1%
Chla	2.4%
HG	2.4%
TN	1.8%
NH3N	0.6%

Use

Aquatic Life	62.2%	} Human Health
Recreation	35.4%	
Fish	2.4%	





Current Water Quality Activities in the Catawba Watershed

- Nutrient modeling
- Surface water withdrawal bills
- Citizen monitoring on Lake Wateree (with USC)
- Catawba Riverkeeper: Muddy WaterWatch
- Recently completed watershed-based plans (using 319 money):
 - Allison Creek Watershed (FC)
 - Fishing Creek Watershed (FC)
 - Big Wateree Creek (FC& Turbidity)
 - Spears Creek (FC)

Watershed Manager's Role

