

Year-in-Review

Jimmy Bagley, CWWMG Board



About CWWMG

Mission

CWWMG's Mission is to identify, fund, and manage projects that will help preserve, extend, and enhance the capabilities of the Catawba-Wateree River Basin to provide water resources for human needs while maintaining the ecological integrity of the waterway.

Membership

- ◆ Catawba River Water Supply Project
 - ◆ Lancaster County Water & Sewer District (SC)
 - ◆ Union County (NC)
- ◆ Chester Metropolitan District (SC)
- ◆ City of Hickory (NC)
- ◆ City of Belmont (NC)
- ◆ City of Camden (SC)
- ◆ Charlotte Water (NC)
- ◆ City of Gastonia, Two Rivers Utilities (NC)
- ◆ City of Lenoir (NC)
- ◆ City of Morganton (NC)
- ◆ City of Mount Holly (NC)
- ◆ City of Rock Hill (SC)
- ◆ City of Statesville (NC)
- ◆ Duke Energy Carolinas, LLC
- ◆ Lincoln County (NC)
- ◆ Lugoff-Elgin Water Authority (SC)
- ◆ Town of Granite Falls (NC)
- ◆ Town of Mooresville (NC)
- ◆ Town of Valdese (NC)

Our Board



Chair
Jimmy Bagley, PE
City of Rock Hill, SC



Vice Chair
Jeff Lineberger, PE
Duke Energy
Carolinas, LLC



Secretary/Treasurer
Ron Hargrove
City of Charlotte, NC



SC At-Large Director
Brad Bucy, PE
Lancaster County Water
& Sewer District, SC



NC At-Large Director
Allison Kraft, PE
Town of Mooresville, NC

Advisory Board

Academic/Research

Calvin Sawyer, PhD

Recreation

Tim Gestwicki

Local Government

Jason Wagner, AICP, CEP

Economic Development

Robert Long, CEcD

Regulatory/State Government

Don Rayno

Residential Landowner of Project or River Frontage

Shirley Greene

Agricultural or Forestry

Mitch Peele / Keith Larick

Industrial or Business Interest

Open

Environment

Vicki Taylor

Chair

Our Vision

We envision a future with a sustainable water source achieved through proactive planning, cutting edge research, and water shortage preparedness.



**Integrated Water
Resources Plan**



**Research and
Technical**



**Education and
Awareness**

Integrated Water Resources Plan



In 2021, the CWWMG began updating the 2014-2015 WSMP and rebranded the effort as the Integrated Water Resources Plan (IWRP) to better represent the CWWMG's comprehensive approach to long-term planning **considering water supply, water demand, water quality, and source water protection.**



4 WORKSHOPS



70 PARTICIPANTS



OVER 150 IDEAS
SHARED

Integrated Water Resources Plan



5 Year Strategic Projects Plan



Integrated Water Resources Plan



Five Year Schedule



Thank You to Our Stakeholder Advisory Committee

Bill Holman

NC Conservation Fund

Kari Raburn, PhD

Regional Stormwater Partnership of the Carolinas

John Wear

(NC) Western Piedmont Regional COG

Jon Greider

SC Department of Parks, Recreation & Tourism

Morris Sample & David Scott

Lake Norman Marine Commission

Reggie Butler

Dominion Resources

Sean McElhone

NC Division of Parks and Recreation

Vann Stancil

NC Wildlife Resources Commission

Leigh Anne Monroe

SC DHEC

Stein Edwards

Gallo

Brandon Jones

Catawba Riverkeeper

Scott Harder

SCDNR

Gregory Sprouse

(SC) Central Midlands COG

Wenonah Haire & Scott Hansen

Catawba Nation

Joe Ghent

(SC) Soil & Water Conservation District

Ray Webber

Lake Wylie Marine Commission

Jeff Parke

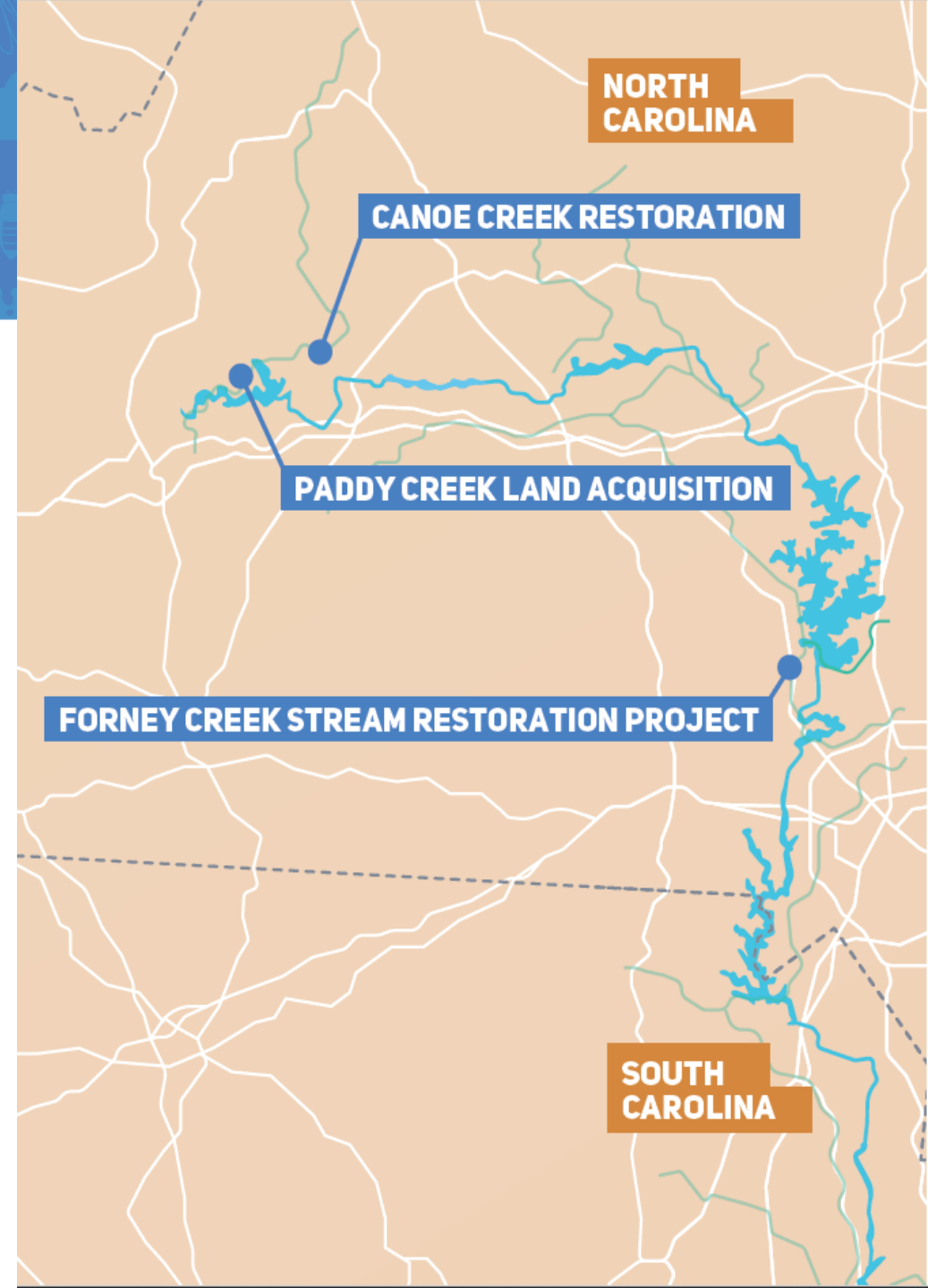
(SC) Santee Lynches COG

Klaus Albertin & Forest Shepherd

NC DEQ Division of Water Resources

Source Water Protection Investments

- **Forney Creek Stream Restoration Project** | Catawba Lands Conservancy
- **Paddy Creek Land Acquisition** | Foothills Conservancy of North Carolina
- **Canoe Creek Restoration** | Foothills Conservancy of North Carolina
- **Wilson Creek National and Wild Scenic River** | Foothills Conservancy of North Carolina



Organizations Eligible to Join CWWMG

- **Water utilities operating** anywhere in the Catawba-Wateree River Basin
 - Includes the South Fork and other tributaries
 - Includes private utility companies
- **Water utilities using water** from the Catawba-Wateree River Basin to serve customers in other river basins
- **Members of the Catawba-Wateree Drought Management Advisory Group including commercial entities that...**
 - Own a water intake within the Catawba-Wateree River Basin OR
 - Own a water treatment plant or distribution system within the Catawba-Wateree River Basin

Citizens Water Academy

January – March 2023

Vicki Taylor, Catawba Wateree Initiative



Academy Photos



Academy Graduates

Brian Couture

Theorem Geo Associates Engineering, PLLC

Jennifer Corbett

Union County Water

Phyllis Sweezy

Phyllis M Sweezy Agency

Christy Churchill

Duke Energy

John Eddins

Theorem Geo Associates Engineering, PLLC

Rachael Rosenstein

Catawba Riverkeeper Foundation

Daniel Burbes

Charlotte Water

Katrina Robinson

Charlotte Water

Roy Sweezy

Phyllis M Sweezy Agency

Derek Dixon

Charlotte Water

Keri Cantrell

Charlotte Water

Ryan Carter

Catawba Riverkeeper Foundation

Forest Shepherd

North Carolina Department of Environmental Quality

Kevin Frank

Lake Norman Marine Commission

Tetiana Zolotukhina

Citizen

Janae Davis

American Rivers

Michelle Landreth

Charlotte Water

Wendy Cauthen

Keep Belmont Beautiful and Catawba Riverkeeper Foundation

Jeff Church

City of Lenoir

Paul Keener

Duke Energy

Will Cauthen

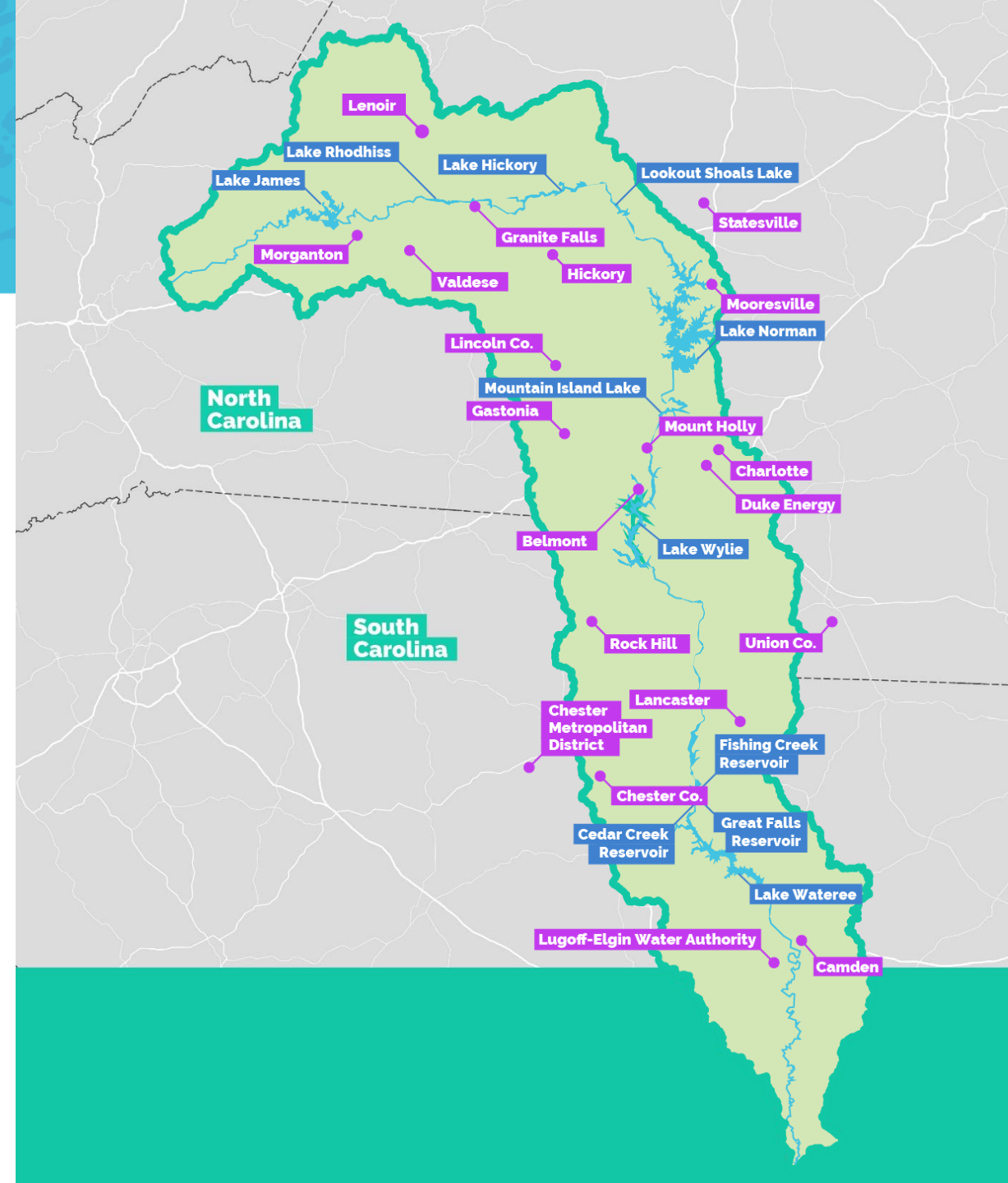
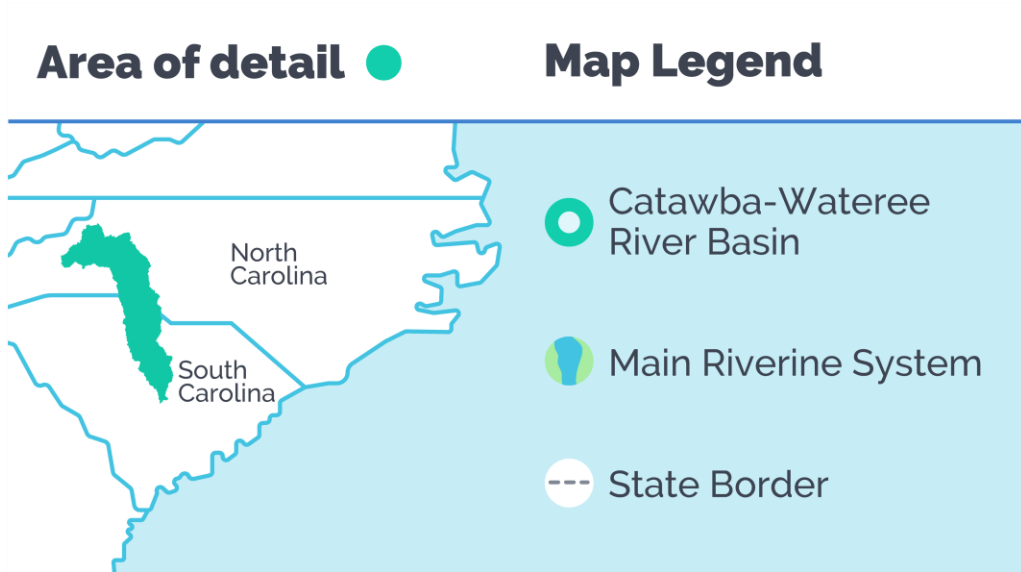
Veolia Advanced Solutions

State of the Basin

Jeff Lineberger, CWWMG Board

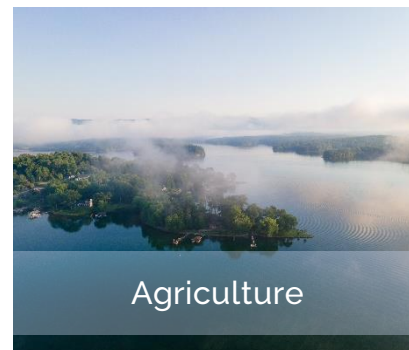


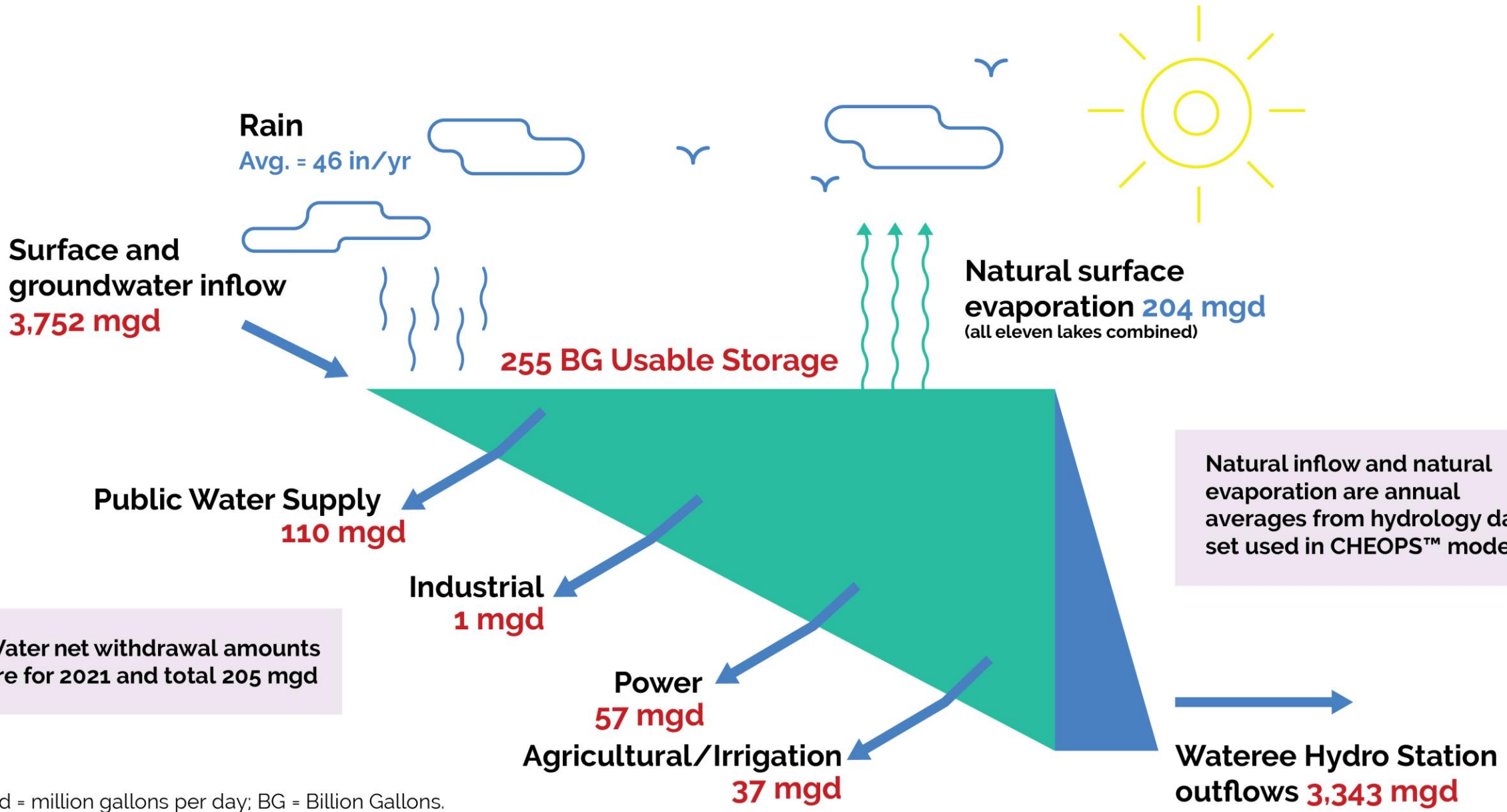
State of the Basin



Hardest Working River in America?

Approximately 2 million people get water from the mainstem river/lake system.





Natural inflow and natural evaporation are annual averages from hydrology data set used in CHEOPS™ model

Water net withdrawal amounts are for 2021 and total 205 mgd

* mgd = million gallons per day; BG = Billion Gallons.

Basin's Future is Very Bright...

Integrated Water
Resources Plan

Many public
recreation
improvements

Coordinated efforts
against invasive
species

Members
implementing water
loss management
initiatives

Source water
protection
partnerships

Regional
wastewater
treatment facility at
Lake Wylie

Inflatable gates at
Wateree Dam

What is your role in balancing the basin? Are you making a difference? If not, why not?

Investing in Public Recreation – Wittenburg Access Area – Lake Hickory



Features

- Boat ramps
- Swim beach
- Picnicking
- Walking trail
- Fishing pier
- Restrooms
- Expanded, lighted parking

Partners

- Duke Energy
- Alexander County
- NC Wildlife Resources Commission

Investing in Public Recreation – Nitrolee Access Area – Great Falls Reservoir



Features

- Kayak launch
- Walking trail
- Historic building
- Restrooms
- Lighted parking
- Provides access to whitewater channels

Partners in the greater complex

- Katawba Valley Land Trust
- Duke Energy
- Town of Great Falls
- Great Falls Home Town Association
- SC Department of Parks, Recreation and Tourism
- SC Department of Natural Resources
- Many more

...But, We Can and Have to Get Better

- What's your role in balancing the basin?
- Are you making a difference?
- If not, why not?



Is the Basin Balanced? – It's Up to Us

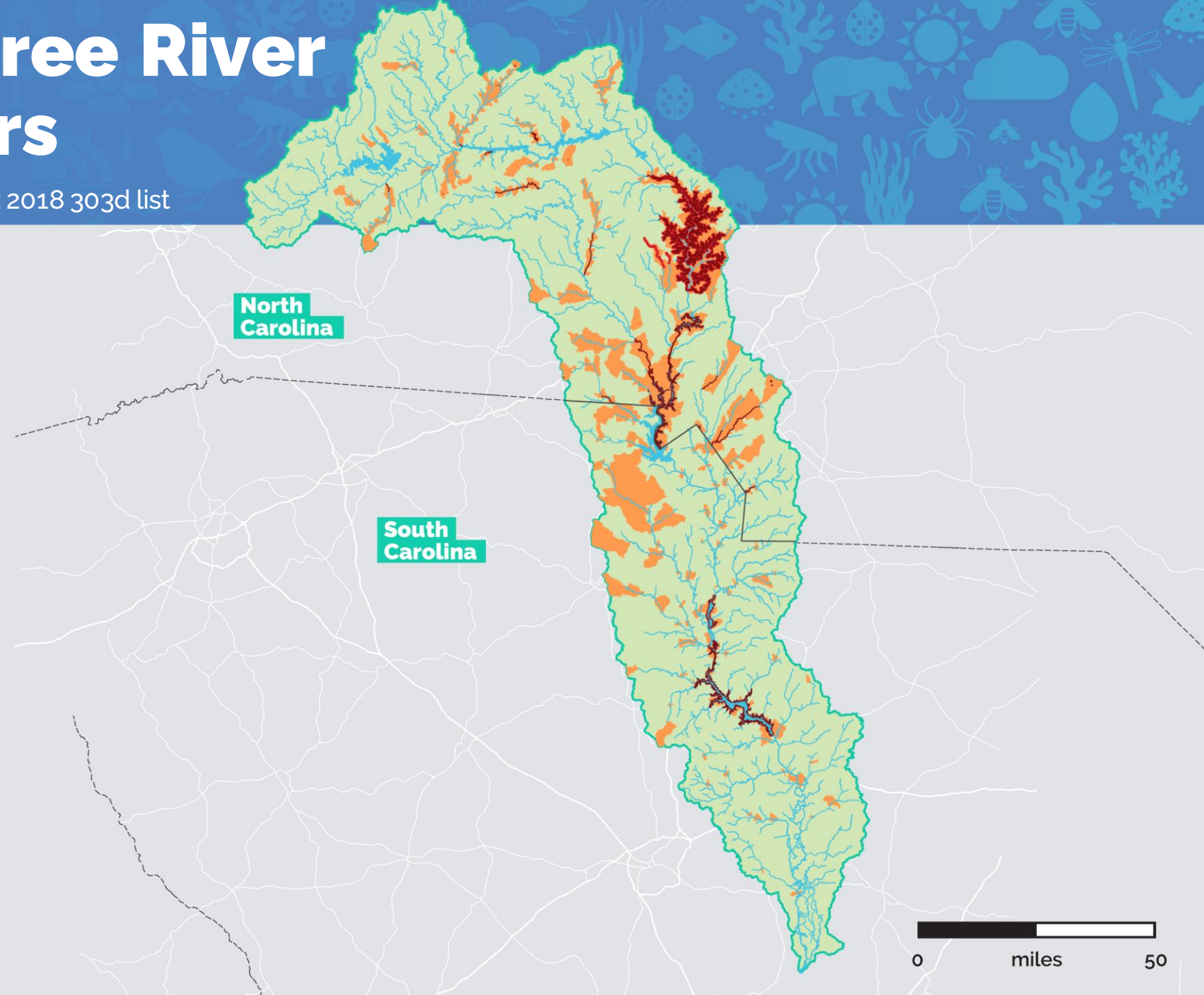



Catawba-Wataeree River Impaired Waters

North Carolina: 2022 303d list; South Carolina: 2018 303d list

Legend

- Impaired Watersheds
- Impaired Waterbodies
- Impaired Streams
- Streams & Waterbodies
- Basin Outline
- State Line



Source: EPA ATTAINS